

# TRAXION HARVEST EXPLAINED

With its unique curved lugs, Vredestein's Traxion Harvest guarantees stability and comfort. Adverse vibrations are absorbed by the lightly curved tread contour.

Longer lugs in the centre of the tread make for smoother rolling and reduced sideways slip on slopes. The angled lug ends are set deep into the straight sidewall, enhancing overall stability.



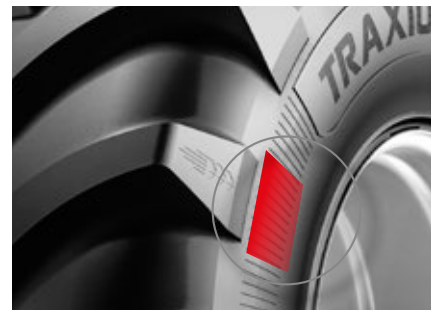
### ANGLED LUG NOSE

Can easily push away sharp stubble



### ANGLED LUG ENDS

For improved lateral stability



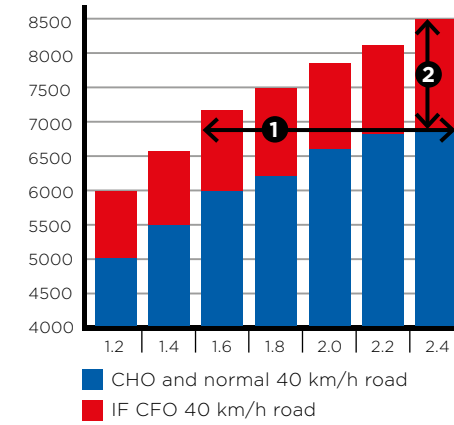
### STRAIGHT SIDEWALL

For maximum width and lateral stability

# CHO AND IF CHO EXPLAINED

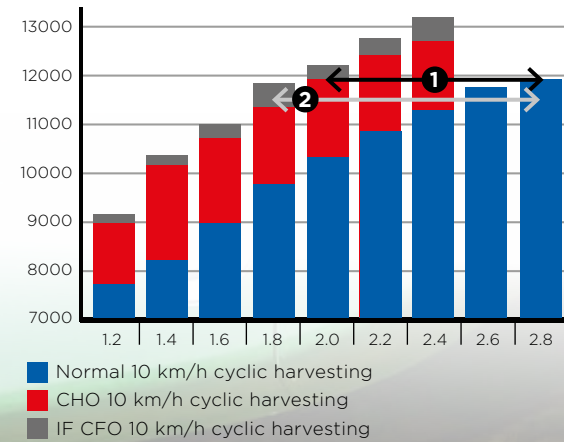
## LOAD CAPACITY AND TYRE PRESSURE FOR DRIVING ON THE ROAD (UP TO 40 KM/H)

Thanks to F+ technology the Traxion Cereall is the best choice when you are working with a forage chopper without CTIS but you want to work with a low tyre pressure.



- Thanks to IF technology the Traxion Cereall may be used with an up to 0,9 bar lower tyre pressure on the road compared to Traxion Harvest.
- Thanks to IF technology the Traxion Cereall can carry up to 20% more load on the road compared to the Traxion Harvest.

## LOAD CAPACITY AND TYRE PRESSURE DURING CYCLIC HARVESTING OPERATIONS SUCH AS COMBINE HARVESTING



- CHO-technology enables the Traxion Harvest CHO to be used with an up to 0,8 bar lower tyre pressure during combine harvesting compared to a standard Traxion Harvest.
- IF CFO technology enables the Traxion Cereall to be used with an up to 0,9 bar lower tyre pressure compared to a standard Traxion Harvest underneath a combine harvester.



## HARVESTER TYRES FOR DRIVE WHEELS

Ø	Service description	Type	Recommended <sup>1</sup>	bar	mm	mm	mm	mm	
26	620/75 R 26 TL	166 A8/B	Traxion Harvest	DW20B	3,2	610	1585	710	4720
	650/75 R 32 TL	172 A8/B	Traxion Harvest	DW21B	3,2	630	1790	825	5350
	680/85 R 32 TL	173 A8/B	Traxion Harvest	DW21B	2,4	650'	1950'	855'	5515'
	680/85 R 32 TL	179 A8/B	Traxion Harvest	DW21B	3,2	650'	1950'	855'	5515'
	680/85 R 32 CHO TL	179 A8/B	Traxion Harvest	DW21B	3,2	650'	1950'	855'	5515'
	800/65 R 32 CHO TL	172 A8/B	Traxion Harvest	DW27B	2,4	770	1830	835	5450
	800/65 R 32 TL	172 A8/B	Traxion Harvest	DW27B	2,4	770	1830	835	5450
	800/65 R 32 TL	178 A8/B	Traxion Harvest	DW27B	3,2	770	1840	835	5450
	800/65 R 32 TL	178 A8/B	Traxion XXL	DW27B	3,2	825	1840	845	5490
	IF 800/70 R 32 CFO TL	181 A8/B	Traxion Cereall	DW27B	2,4	815	1945	865	5765
32	800/70 R 32 CHO TL	175 A8/B	Traxion Harvest	DW27B	2,4	770	1925	870	5700
	800/70 R 32 TL	175 A8/B	Traxion Harvest	DW27B	2,4	770	1925	870	5700
	800/70 R 32 TL	181 A8/B	Traxion Harvest	DW27B	3,2	780	1925	870	5700
	900/60 R 32 CHO TL	176 A8/B	Traxion Harvest	DW27B	2,4	835	1885	850	5610
	900/60 R 32 TL	176 A8/B	Traxion Harvest	DW27B	2,4	835	1885	850	5610
	900/60 R 32 TL	181 A8/B	Traxion Harvest	DW27B	3,2	835	1885	850	5610
	710/70 R 38 TL	171 D	Traxion XXL	DW23B	2,4	730	1940	870	5760
	710/75 R 38 TL	174 D	Traxion XXL	DW23B	2,4	715	2000	910	5950
	800/70 R 38 CHO TL	181 D / 184 A8	Traxion Harvest	DW25B	2,8	755'	2050'	930'	6120'
	800/70 R 38 TL	181 D / 184 A8	Traxion Harvest	DW25B	2,8	755'	2050'	930'	6120'
38	800/70 R 38 TL	178 D	Traxion XXL	DW25B	2,4	825	2065	940	6160
	900/60 R 38 TL	178 D / 181 A8	Traxion XXL	DW27B	2,4	870	2040	925	6100
	710/70 R 42 TL	173 D	Traxion XXL	DW23B	2,4	730	2060	940	6140
	710/75 R 42 TL	175 D	Traxion XXL	DW23B	2,4	735	2150	980	6395

## HARVESTER TYRES FOR STEERING WHEELS

Ø	Service description	Type	Recommended <sup>1</sup>	bar	mm	mm	mm	mm	
20	400/70 R 20 IND TL	149 A8/B	Traxion Versa	I3	4,0	405	1075	475	3250
	460/70 R 24 IMP TL	163 A8	Traxion Harvest	DW15L	3,2	455	1235	550'	3670'
	460/70 R 24 IND TL	159 A8/B	Traxion Versa	DW15L	4,0	480	1255	570	3800
24	500/70 R 24 IMP TL	164 A8	Traxion Harvest	DW15L	2,8	480	1300	590'	3880'
	500/70 R 24 IND TL	164 A8/B	Traxion Versa	DW16L	4,0	515	1320	595	4020
	500/85 R 24 IMP TL	171 A8	Traxion Harvest	DW15L	2,8	505'	1450'	650'	4310'
26	480/80 R 26 IND TL	160 A8/B	Traxion Versa	DW15L	3,2	495	1440	645	4320
	620/75 R 26 TL	166 A8/B	Traxion Harvest	DW20B	3,2	610	1585	710	4720
	500/80 R 28 IMP	176 A8/B	Traxion Harvest	DW15L	3,2	495'	1490'	675'	4430'
28	600/65 R 28 IMP	168 A8/B	Traxion Harvest	DW18L	2,0	595'	1470'	645'	4370'
	600/65 R 28 TL	154 D	Traxion XXL	DW18L	2,4	595	1490	670	4405
	600/70 R 28 TL	157 D	Traxion XXL	DW20B	2,4	610	1540	700	4590
	500/85 R 30 IMP	176 A8/B	Traxion Harvest	DW16L	2,8	590	1590	705'	4760'
30	600/70 R 30 TL	158 D	Traxion XXL	DW20B	2,4	630	1590	725	4750
	620/70 R 30 IMP	178 A8/B	Traxion Harvest	DW20B	2,4	605'	1600'	705'	4760'
	710/60 R 30 TL	162 D	Traxion XXL	DW23B	2,4	705	1610	730	4800

<sup>1</sup> Calculated values  
<sup>2</sup> The dimensions indicated, which apply to a nominal tyre pressure, may vary in practice under the influence of actual tyre pressure and conditions of use.  
<sup>3</sup> Subject to changes in specifications.  
<sup>4</sup> Recommended rim. For more permitted rims, please refer to the technical databook.



# TRAXION CONCEPT EXPLAINED

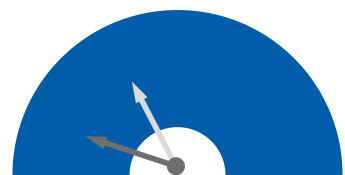
Vredestein tyres give the lowest total costs of ownership. In the Traxion tyres this is reached mainly through extended lifespan and high productivity compared to competition.



Blue Traction Zone  
Red Comfort Zone

TRACTION ZONE	IN THE FIELD	TRANSVERSE LUGS AND OPEN SHOULDER	MAXIMUM TRACTION	MAXIMUM PRODUCTIVITY
COMFORT ZONE		LUG IN DRIVING DIRECTION	IMPROVED RESISTANCE TO SIDE SLIP	GOOD DRIVING BEHAVIOUR ON SLOPES
	ON THE ROAD	EXTENDED LUG NOSE AT THE CENTRE	INCREASED RUBBER AMOUNT IN THE CENTRE OF THE TREAD	EXTREMELY GOOD WEAR RESISTANCE
		RUBBER IN DRIVING DIRECTION	ALMOST CONTINUOUS CONTACT WITH THE ROAD	HIGH COMFORT LEVEL

## RUBBER RATIO TRACTION ZONE



Competition 32%  
Vredestein 24%

A little bit less rubber, so larger spacing between lugs and shoulder enables maximum traction and self-cleaning that leads to high productivity.



Vredestein

Competition

## RUBBER RATIO COMFORT ZONE

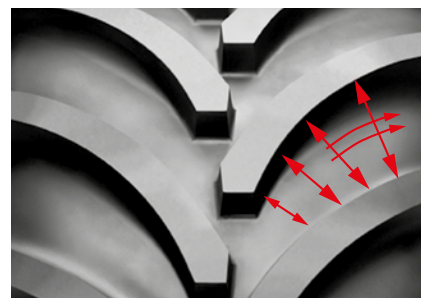


Competition 40%  
Vredestein 47%

More rubber, so closer spacing between lugs in the centre, for smooth driving behaviour and extremely high wear resistance that leads to the longest tyre life.

## NON-PARALLEL LUGS

Unique non-parallel lugs, with increasing gap from the centre to the shoulder, to easily push out the soil. This enhanced self-cleaning ensures the tyre keeps traction, which leads to optimum productivity.



# RECOMMENDED VREDESTSTEIN TYRES

## FORAGE CHOPPER

**WITH CTIS**  
achieve maximum traction and fuel savings  
minimize soil compaction and rutting



**WITHOUT CTIS**  
achieve maximum traction and fuel savings  
minimize soil compaction and rutting



## COMBINE HARVESTER and bunker harvesters such as potato and beet harvesters

**FOLDABLE HEADER ON THE ROAD**  
achieve maximum traction and fuel savings  
minimize soil compaction and rutting



**TOWED HEADER ON THE ROAD**  
achieve maximum traction and fuel savings  
minimize soil compaction and rutting



## GENERAL

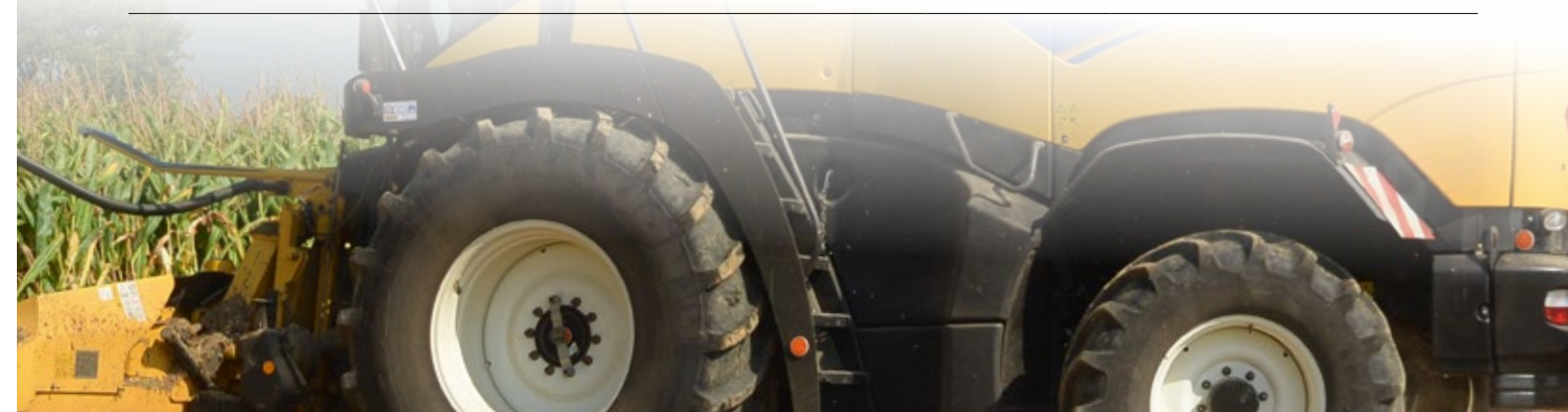
**TYRE WIDTH OPTIMIZED**  
for strict maximum vehicle width



**TREAD AND CONTOUR OPTIMIZED**  
for maximum comfort on the road



**TREAD AND CONTOUR OPTIMIZED**  
for stability on slopes



<b>APOLLO VREDESTSTEIN EXPORT</b> +31 (0)53 4888 400 export@apollovredestein.com www.vredestein.com	<b>APOLLO VREDESTSTEIN LTD. (UK)</b> +44 (0)330 333 1294 customer.uk@apollovredestein.com www.vredestein.co.uk	<b>APOLLO VREDESTSTEIN TIRES, INC. (USA)</b> +1 732 549 2440 customer.us@apollovredestein.com www.vredestein.com
--	---	---



# HARVESTER TYRES

#LIVETHELAND  
FEEL THE FREEDOM. EXPERIENCE THE PERFORMANCE.

